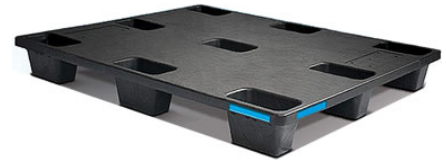


PP4840N-Rnest

48x40 (Standard) Plastic Industrial Pallet



Technical Data

Dimensions 48x40x5.75 inches
Weight 34 lbs

Load Capacities

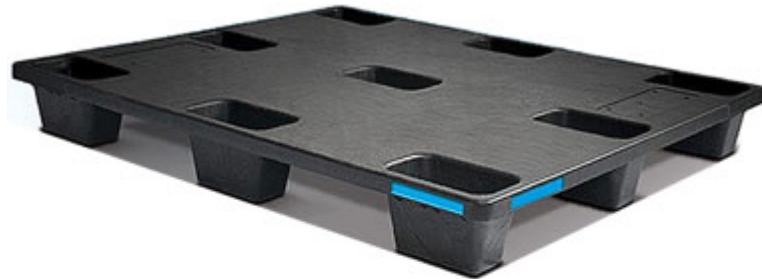
Static 30000 lbs
Dynamic 4000 lbs
Racking --

Entry 4-way
Truckload Qty 1020
Stack TL 34

TL (truckload) quantities are approximate and may vary by transport equipment or other factors.

Handling Data

| | | |
|------------------------|--|-----------------------------------|
| Nestable Yes | Reusability One-Way & Multi-Trip | ISPM-15 Exempt Yes |
| Stackable -- | Destination Captive & Export | Food Grade Yes, non-FDA |
| Rackable No | Airfreight Yes | Pharmaceutical Yes |



Materials and Colors

Condition
New

Material HDPE (Recycled) **Color** Black

(High-Density Polyethylene)

Deck Specs

Top Deck
Closed

Bottom Deck
9 Feet - Nesting

Available Options:
Colored Side Stripes for easy ID
Embossed Customized Name Plates
Custom In-Mold Side Labeling
Hot Stamping

Features

- Nesting saves storage & shipping costs
- Easy-to-clean hygienic design
- Suitable for packaged food items
(not approved for direct food contact)
- Impervious to acids, fats, solvents and odors
- Resists water absorption & bacteria growth
- Inert to infestation, mold and mildew
- Consistently dimensionally accurate
- Exempt from ISPM 15 shipping regulations

NelsonTM

The Nelson Company

(443) 649-5294

plastic@NelsonCompany.com

www.NelsonCompany.com

www.NelsonTechCenter.com