

# NPP-4840-FP-E6OD-FDA

## 48x40 (Standard) Plastic Industrial Pallet



### Technical Data

Dimensions 48x40x6.1 inches (1219x1016x155 mm)  
Weight 34.0 lbs

#### Load Capacities

Static 8800 lbs  
Dynamic 4400 lbs  
Racking 2200 lbs

Entry 4-way  
Truckload Qty 510  
Stack TL / LTL 17 / 15

TL (truckload) and LTL (less-than-truckload) quantities are approximate and may vary by transport equipment or other factors.

### Handling Data

|                         |                                  |                                   |
|-------------------------|----------------------------------|-----------------------------------|
| <b>Nestable</b><br>No   | <b>Reusability</b><br>Multi-Trip | <b>ISPM-15 Exempt</b><br>Yes      |
| <b>Stackable</b><br>Yes | <b>Destination</b><br>Captive    | <b>Food Grade</b><br>FDA Approved |
| <b>Rackable</b><br>Yes  | <b>Airfreight</b><br>Yes         | <b>Pharmaceutical</b><br>Yes      |

### Materials and Colors

**Condition**  
New

**Material**  
HDPP

**Color**  
Blue

(Virgin)

### Deck Specs

**Top Deck**  
Open

**Bottom Deck**  
6 Runner - Perimeter+2 Cross  
(cruciform perimeter base)

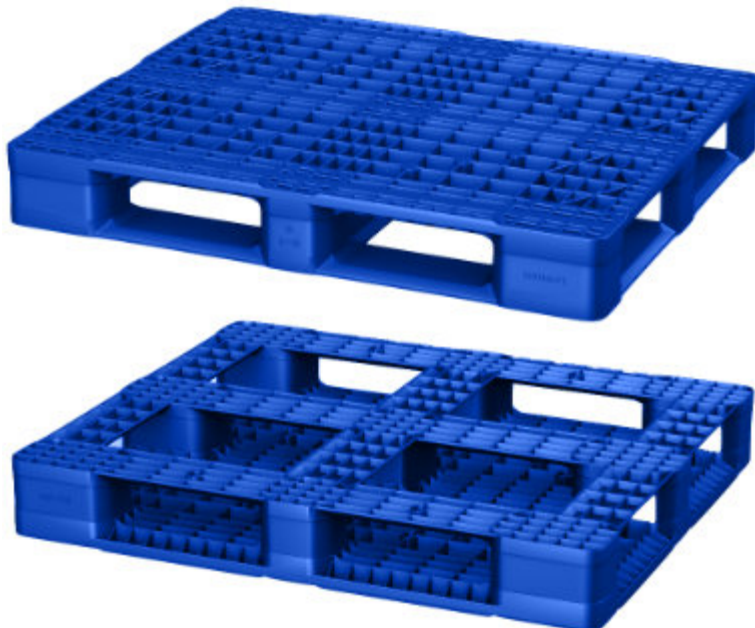
#### Available Options:

RFID Transponders  
Individual Markings  
Anti-Slip Bottom Grommets  
ESD Prevention for Anti-Static  
Rod Inserts for Increased Performance.

### Features

Ideal for closed loops or distribution chains across industry sectors including Food, Retail, Medical and Pharmaceutical.

- High performance at low cost
- Top Safety Rim
- Open deck flow-thru design
- Allows for safe double stacking
- Sanitary choice for strict drug manufacturing requirements
- Impervious to acids, fats, solvents and odors
- Resists water absorption & bacteria growth
- Inert to infestation, mold and mildew
- Consistently dimensionally accurate
- Exempt from ISPM 15 shipping regulations



## Nelson™

The Nelson Company

(443) 649-5294

[plastic@NelsonCompany.com](mailto:plastic@NelsonCompany.com)

[www.NelsonCompany.com](http://www.NelsonCompany.com)

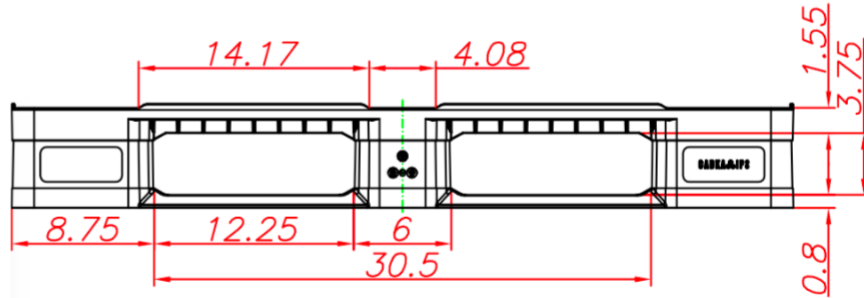
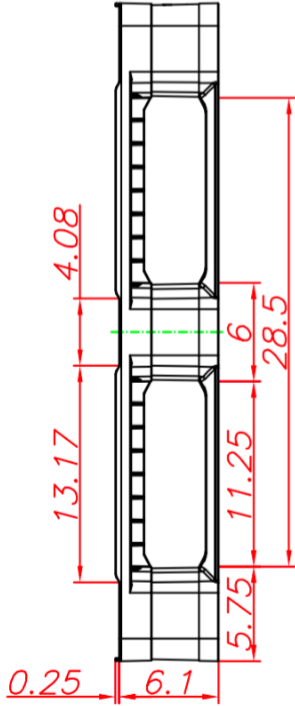
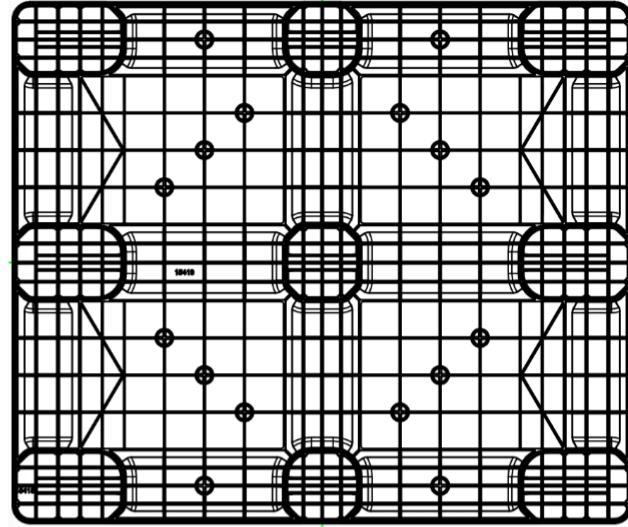
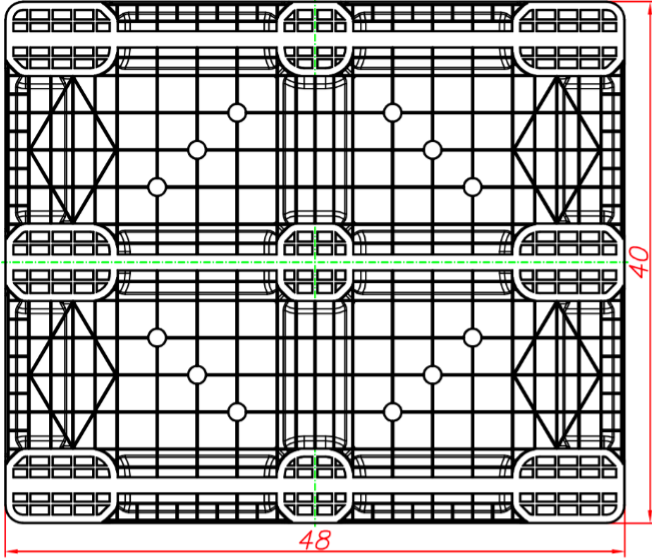
[www.NelsonTechCenter.com](http://www.NelsonTechCenter.com)

# NPP-4840-FP-E6OD-FDA

48x40 (Standard)  
Plastic Industrial Pallet



## Technical Drawings



**Nelson**™

The Nelson Company

(443) 649-5294

[plastic@NelsonCompany.com](mailto:plastic@NelsonCompany.com)

[www.NelsonCompany.com](http://www.NelsonCompany.com)

[www.NelsonTechCenter.com](http://www.NelsonTechCenter.com)