

# UP-4832-N-210ACM

48x32 (Euro)

Plastic Industrial Pallet



## Technical Data

Dimensions 47.2x31.5x5.5 inches (1200x800x140 mm)  
Weight 20.0 lbs

### Load Capacities

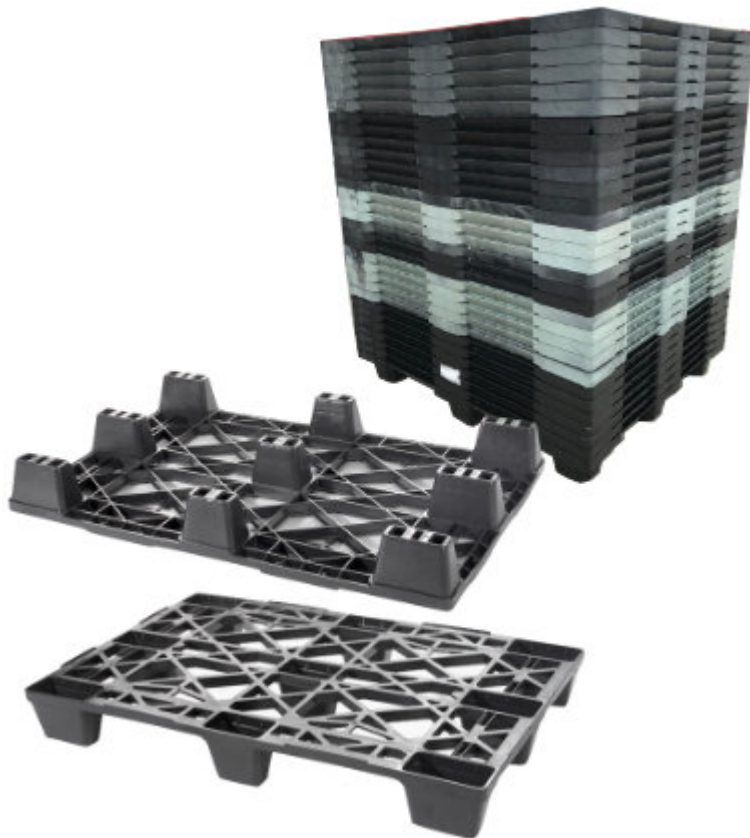
Static 7100 lbs  
Dynamic 2600 lbs  
Racking --

Entry 4-way  
Truckload Qty 1976  
Stack TL 52

Load capacities for used pallets may be unavailable or may have changed since issued. Unit load Sample Tests (ST) are recommended to confirm successful use with specific applications and equipment. TL (truckload) quantities are approximate and may vary by transport equipment or other factors.

## Handling Data

<b>Nestable</b> Yes	<b>Reusability</b> One-Way	<b>ISPM-15 Exempt</b> Yes
<b>Stackable</b> No	<b>Destination</b> Export	<b>Food Grade</b> Yes, non-FDA
<b>Rackable</b> No	<b>Airfreight</b> Yes	<b>Pharmaceutical</b> Yes



## Materials and Colors

**Condition**  
Used

**Material**  
ACM (Recycled)

**Color**  
Varies

Colors and manufacturers vary and orders may be mixed. To avoid return freight charges ask your Sales Rep about special requests. All used pallets have been inspected and cleaned. Pallets may have limited cosmetic damage, but all are structurally sound.

## Deck Specs

**Top Deck**  
Open

**Bottom Deck**  
9 Feet - Nesting

## Features

Structurally sound but slightly irregular pallets. Color varies (black, gray or light gray.) Some pallets have "short shots" (very small gaps where plastic didn't quite fill the mold).

- Standard size used across EU
- Design is popular in rail freight applications
- Nesting saves storage & shipping costs
- Low-cost Plastic Pallet
- Easy-to-clean hygienic design
- Suitable for packaged food items  
(not approved for direct food contact)
- Impervious to acids, fats, solvents and odors
- Resists water absorption & bacteria growth
- Inert to infestation, mold and mildew
- Consistently dimensionally accurate
- Exempt from ISPM 15 shipping regulations

**Nelson**<sup>TM</sup>

The Nelson Company

(443) 649-5294

[plastic@NelsonCompany.com](mailto:plastic@NelsonCompany.com)

[www.NelsonCompany.com](http://www.NelsonCompany.com)

[www.NelsonTechCenter.com](http://www.NelsonTechCenter.com)