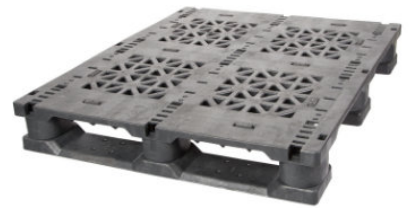


# GL-4032-3R-140mm36lbs

40x32

Plastic Beverage Pallet



## Technical Data

Dimensions 40x32x5.5 inches (1016x813x140 mm)  
Weight 36.0 lbs

### Load Capacities

Static 30000 lbs  
Dynamic 5000 lbs  
Racking 1000 lbs

Entry 4-way  
Truckload Qty 810  
Stack TL 18

TL (truckload) quantities are approximate and may vary by transport equipment or other factors.

## Handling Data

<b>Nestable</b> No	<b>Reusability</b> Multi-Trip	<b>ISPM-15 Exempt</b> Yes
<b>Stackable</b> Yes	<b>Destination</b> Captive	<b>Food Grade</b> Yes, non-FDA
<b>Rackable</b> Yes	<b>Airfreight</b> Yes	<b>Pharmaceutical</b> Yes

## Materials and Colors

**Condition**  
New

**Material**  
HDPE (Recycled)

**Color**  
Gray

(High-Density Polyethylene)

## Deck Specs

**Top Deck**  
Open

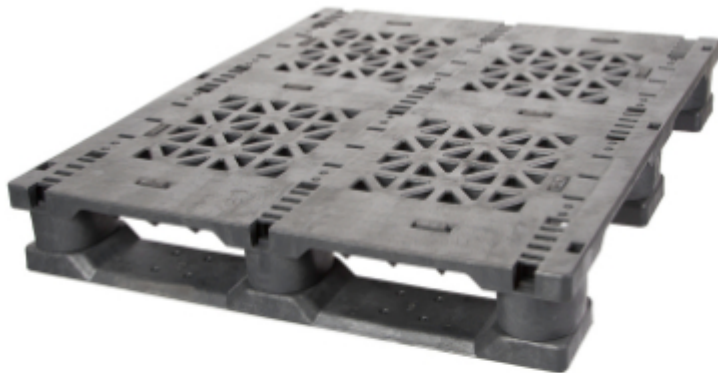
**Bottom Deck**  
3 Runner - Unidirectional Long Side

**Available Options:**  
Rod Inserts (3)

## Features

Specifically designed for the beverage industry.

- Allows for safe double stacking
- Easy-to-clean hygienic design
- Suitable for packaged food items  
(not approved for direct food contact)
- Impervious to acids, fats, solvents and odors
- Resists water absorption & bacteria growth
- Inert to infestation, mold and mildew
- Consistently dimensionally accurate
- Exempt from ISPM 15 shipping regulations



**Nelson**<sup>TM</sup>

The Nelson Company

(443) 649-5294

[plastic@NelsonCompany.com](mailto:plastic@NelsonCompany.com)

[www.NelsonCompany.com](http://www.NelsonCompany.com)

[www.NelsonTechCenter.com](http://www.NelsonTechCenter.com)

Spec Sheet Generated On: 5/20/2024

Specs subject to change without notice. Provided for informational purposes only. Technical data are guideline values and may vary based on intended use, features, raw materials and environment. Nothing shall be construed as warranties or guarantees, express or implied, regarding products or their use, application, performance or otherwise.