

# UP-4840-N-107USCD

## 48x40 (Standard) Plastic Industrial Pallet



### Technical Data

Dimensions 48x40x5.1 inches (1219x1016x130 mm)  
Weight 14 lbs

#### Load Capacities

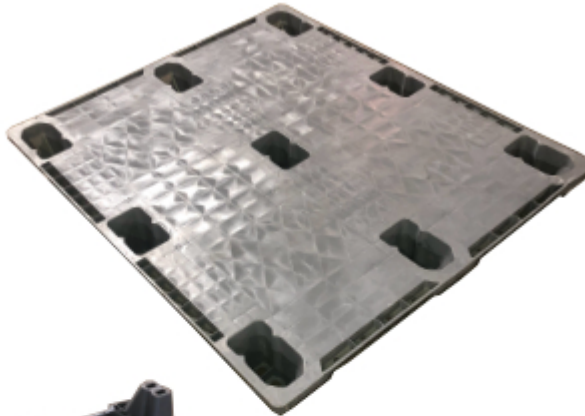
Static 3300 lbs  
Dynamic 2200 lbs  
Racking --

Entry 4-way  
Truckload Qty 2370  
Stack TL 79

Load capacities for used pallets may be unavailable or may have changed since issued. Unit load Sample Tests (ST) are recommended to confirm successful use with specific applications and equipment. TL (truckload) quantities are approximate and may vary by transport equipment or other factors.

### Handling Data

<b>Nestable</b> Yes	<b>Reusability</b> One-Way & Multi-Trip	<b>ISPM-15 Exempt</b> Yes
<b>Stackable</b> No	<b>Destination</b> Export & Captive	<b>Food Grade</b> Yes, non-FDA
<b>Rackable</b> No	<b>Airfreight</b> Yes	<b>Pharmaceutical</b> Yes



### Materials and Colors

**Condition**  
Used

**Material**  
HDPE/PP (Recycled)

**Color**  
Varies

(High-Density Polyethylene/Polypropylene)

Colors and manufacturers vary and orders may be mixed. To avoid return freight charges ask your Sales Rep about special requests. All used pallets have been inspected and cleaned. Pallets may have limited cosmetic damage, but all are structurally sound.

### Deck Specs

**Top Deck**  
Closed

**Bottom Deck**  
9 Feet - Nesting

### Features

- Top deck has no lips or safety tabs
- Designed to easily secure wrapping
- Nesting saves storage & shipping costs
- Easy-to-clean hygienic design
- Suitable for packaged food items  
(not approved for direct food contact)
- Impervious to acids, fats, solvents and odors
- Resists water absorption & bacteria growth
- Inert to infestation, mold and mildew
- Consistently dimensionally accurate
- Exempt from ISPM 15 shipping regulations

**Nelson**<sup>TM</sup>

The Nelson Company

(443) 649-5294

[plastic@NelsonCompany.com](mailto:plastic@NelsonCompany.com)

[www.NelsonCompany.com](http://www.NelsonCompany.com)

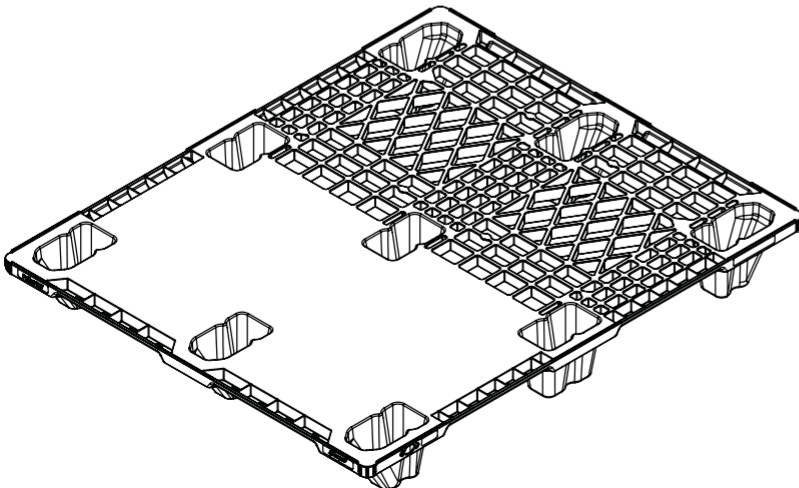
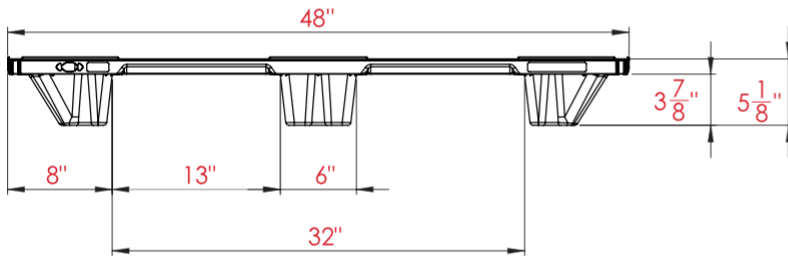
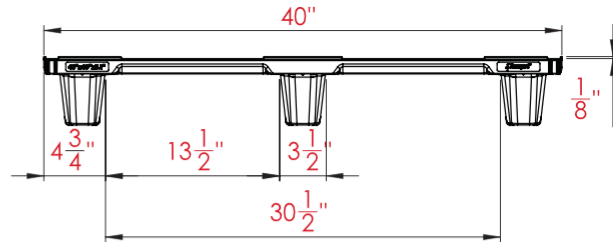
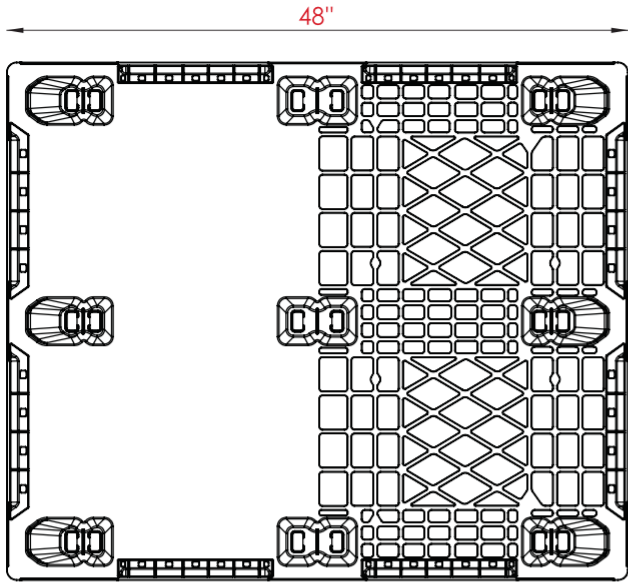
[www.NelsonTechCenter.com](http://www.NelsonTechCenter.com)

# UP-4840-N-107USCD

48x40 (Standard)  
Plastic Industrial Pallet



## Technical Drawings



**Nelson**™

The Nelson Company

(443) 649-5294

[plastic@NelsonCompany.com](mailto:plastic@NelsonCompany.com)

[www.NelsonCompany.com](http://www.NelsonCompany.com)

[www.NelsonTechCenter.com](http://www.NelsonTechCenter.com)