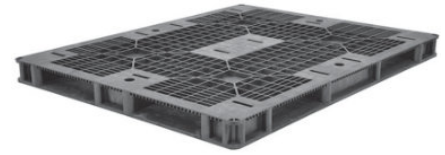


IP-5644FP-112mm47lbs

56x44

Plastic Bulk Beverage Pallet



Technical Data

Dimensions 56x44x4.5 inches (1120x1420x112 mm)
Weight 47.0 lbs

Load Capacities

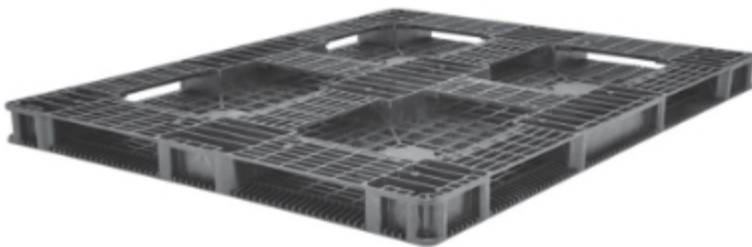
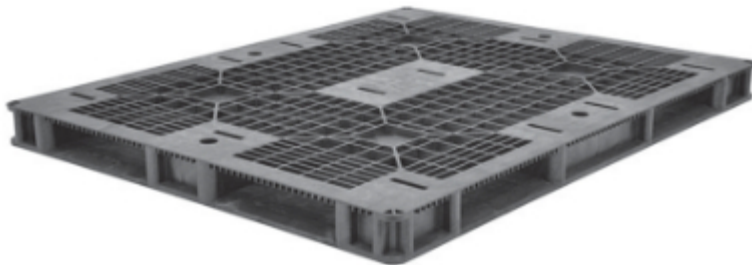
Static 30000 lbs
Dynamic 2500 lbs
Racking 1600 lbs

Entry 4-way
Truckload Qty 528
Stack TL / LTL 24 / 21

TL (truckload) and LTL (less-than-truckload) quantities are approximate and may vary by transport equipment or other factors.

Handling Data

Nestable No	Reusability Multi-Trip	ISPM-15 Exempt Yes
Stackable Yes	Destination Captive & Export	Food Grade Yes, non-FDA
Rackable Yes	Airfreight No	Pharmaceutical Yes



Materials and Colors

Condition
New

Material
HDPE/PP (Recycled)

Color
Black

(HDPE/PP Structural Foam)

Deck Specs

Top Deck
Open

Bottom Deck
6 Runner - Perimeter+2 Cross
(cruciform perimeter base)

Features

- Injection molded
- Allows for safe double stacking
- Easy-to-clean hygienic design
- Suitable for packaged food items
(not approved for direct food contact)
- Impervious to acids, fats, solvents and odors
- Resists water absorption & bacteria growth
- Inert to infestation, mold and mildew
- Consistently dimensionally accurate
- Exempt from ISPM 15 shipping regulations

NelsonTM

The Nelson Company

(443) 649-5294

plastic@NelsonCompany.com

www.NelsonCompany.com

www.NelsonTechCenter.com