

QP-4545-3R-165mm46lbs

45x45 (Square)

Plastic Industrial Pallet



Technical Data

Dimensions 45x45x6.5 inches (1140x1140x165 mm)
Weight 46.0 lbs

Load Capacities

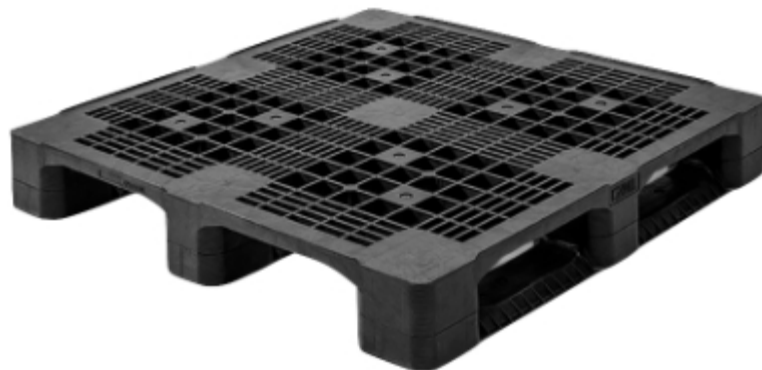
Static 16500 lbs
Dynamic 4400 lbs
Racking 2200 lbs

Entry 4-way
Truckload Qty 364
Stack TL / LTL -- / 14

TL (truckload) and LTL (less-than-truckload) quantities are approximate and may vary by transport equipment or other factors.

Handling Data

Nestable No	Reusability One-Way & Multi-Trip	ISPM-15 Exempt Yes
Stackable Yes	Destination Captive & Export	Food Grade Yes, non-FDA
Rackable Yes	Airfreight Yes	Pharmaceutical Yes



Materials and Colors

Condition
New

Material
HDPE (Recycled)

Color
Black

(High-Density Polyethylene)

Deck Specs

Top Deck
Open

Bottom Deck
3 Runner - Unidirectional

Features

Ships from Europe in 40' Sea Containers (14 per Stack / 280 Total.)

- Allows for safe double stacking
- Easy-to-clean hygienic design
- Suitable for packaged food items
(not approved for direct food contact)
- Impervious to acids, fats, solvents and odors
- Resists water absorption & bacteria growth
- Inert to infestation, mold and mildew
- Consistently dimensionally accurate
- Exempt from ISPM 15 shipping regulations

NelsonTM

The Nelson Company

(443) 649-5294

plastic@NelsonCompany.com

www.NelsonCompany.com

www.NelsonTechCenter.com