

NPP-4840-FP-E6OD-3Rod-FDA

48x40 (Standard) Plastic Industrial Pallet



Technical Data

Dimensions 48x40x6.1 inches (1219x1016x155 mm)
Weight 48.0 lbs

Load Capacities

Static 11200 lbs
Dynamic 5600 lbs
Racking 2800 lbs

Entry 4-way
Truckload Qty 510
Stack TL / LTL 17 / 15

TL (truckload) and LTL (less-than-truckload) quantities are approximate and may vary by transport equipment or other factors.

Handling Data

| | | |
|-------------------------|----------------------------------|-----------------------------------|
| Nestable No | Reusability Multi-Trip | ISPM-15 Exempt Yes |
| Stackable Yes | Destination Captive | Food Grade FDA Approved |
| Rackable Yes | Airfreight Yes | Pharmaceutical Yes |

Materials and Colors

Condition
New

Material
HDPP

Color
Blue

(Virgin)

Deck Specs

Top Deck
Open

Bottom Deck
6 Runner - Perimeter+2 Cross
(cruciform perimeter base)

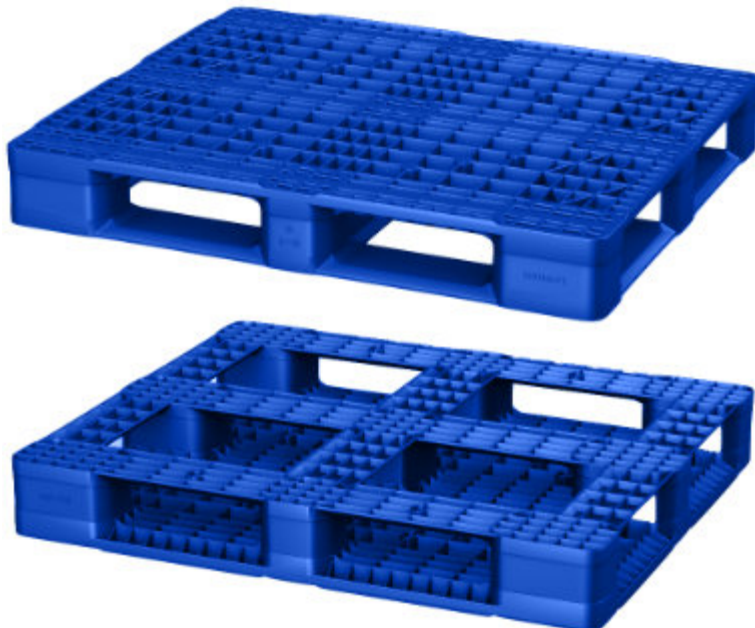
Available Options:

RFID Transponders
Individual Markings
Anti-Slip Bottom Grommets
ESD Prevention for Anti-Static

Features

Ideal for closed loops or distribution chains across industry sectors including Food, Retail, Medical and Pharmaceutical.

- High performance at low cost
- Open deck flow-thru design
- Includes 3 Rod Inserts for Increased Performance
- Top Safety Rim
- Allows for safe double stacking
- Impervious to acids, fats, solvents and odors
- Resists water absorption & bacteria growth
- Inert to infestation, mold and mildew
- Consistently dimensionally accurate
- Exempt from ISPM 15 shipping regulations



NelsonTM

The Nelson Company

(443) 649-5294

plastic@NelsonCompany.com

www.NelsonCompany.com

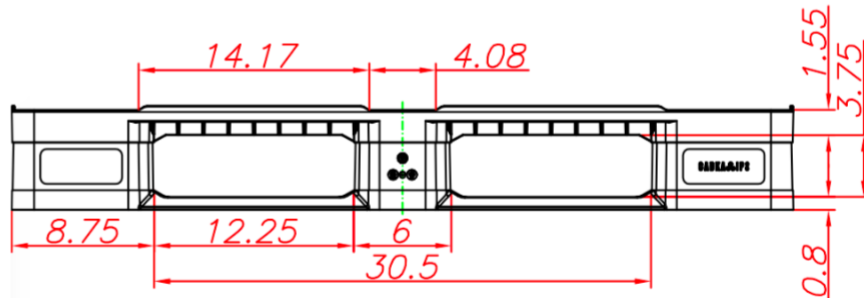
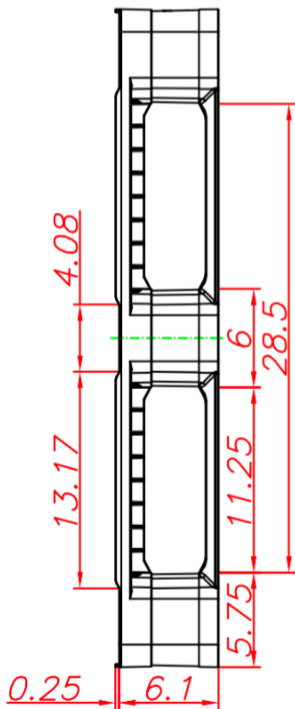
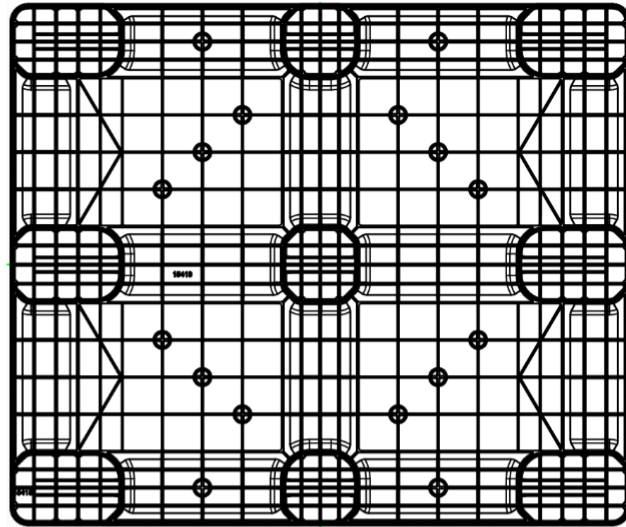
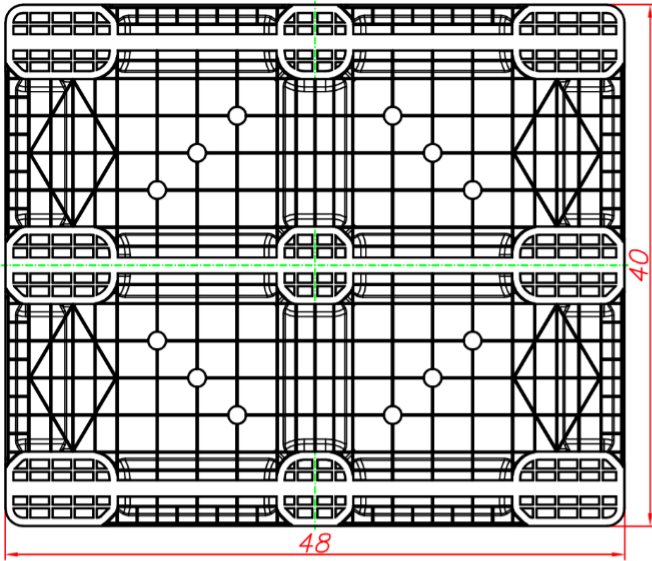
www.NelsonTechCenter.com

NPP-4840-FP-E6OD-3Rod-FDA

48x40 (Standard)
Plastic Industrial Pallet



Technical Drawings



Nelson™

The Nelson Company

(443) 649-5294

plastic@NelsonCompany.com

www.NelsonCompany.com

www.NelsonTechCenter.com