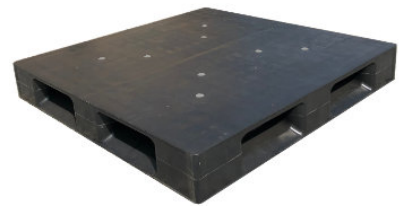


# UP-1111-FP-NPC-CD351b

## 43x43 (Square) Plastic Container Pallet



### Technical Data

Dimensions 43.3x43.3x6 inches (1100x1100x150 mm)  
Weight 35.0 lbs

#### Load Capacities

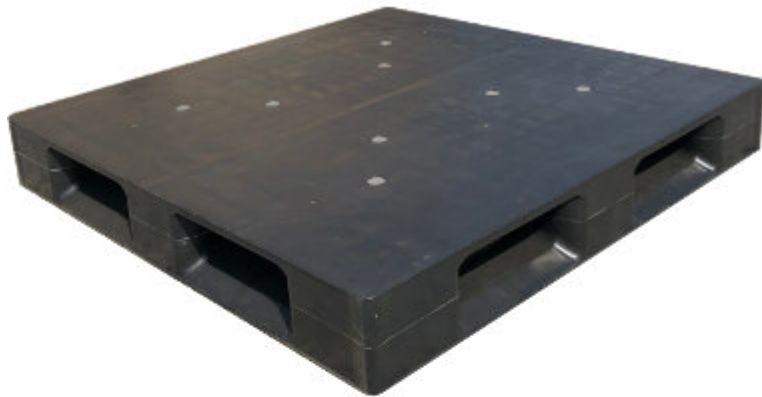
Static 7200 lbs  
Dynamic 2400 lbs  
Racking ST Req

Entry 4-way  
Truckload Qty 448  
Stack TL / LTL -- / 16

Load capacities for used pallets may be unavailable or may have changed since issued. Unit load Sample Tests (ST) are recommended to confirm successful use with specific applications and equipment. TL (truckload) and LTL (less-than-truckload) quantities are approximate and may vary by transport equipment or other factors.

### Handling Data

<b>Nestable</b> No	<b>Reusability</b> One-Way & Multi-Trip	<b>ISPM-15 Exempt</b> Yes
<b>Stackable</b> Yes	<b>Destination</b> Captive & Export	<b>Food Grade</b> Yes, non-FDA
<b>Rackable</b> Yes	<b>Airfreight</b> Yes	<b>Pharmaceutical</b> Yes



### Materials and Colors

**Condition**  
Used

**Material** HDPE/PP  
**Color** Varies

(High-Density Polyethylene / Polypropylene)

Colors and manufacturers vary and orders may be mixed. To avoid return freight charges ask your Sales Rep about special requests. All used pallets have been inspected and cleaned. Pallets may have limited cosmetic damage, but all are structurally sound.

### Deck Specs

**Top Deck**  
Closed

**Bottom Deck**  
6 Runner - Perimeter+2 Cross  
(cruciform perimeter base)

### Features

- Anti-slip Grommets on the closed deck
- Allows for safe double stacking
- Cubes out shipping container to save costs
- Designed for Super Sack® and drum loads
- Easy-to-clean hygienic design
- Suitable for packaged food items  
(not approved for direct food contact)
- Impervious to acids, fats, solvents and odors
- Resists water absorption & bacteria growth
- Inert to infestation, mold and mildew
- Consistently dimensionally accurate
- Exempt from ISPM 15 shipping regulations

**Nelson**™

The Nelson Company

(443) 649-5294

[plastic@NelsonCompany.com](mailto:plastic@NelsonCompany.com)

[www.NelsonCompany.com](http://www.NelsonCompany.com)

[www.NelsonTechCenter.com](http://www.NelsonTechCenter.com)