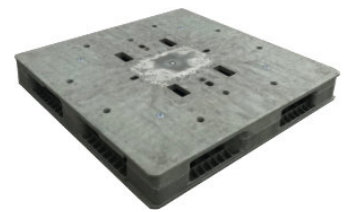


# UP-1111-RV-140mm60lbs

43x43 (Square)

Plastic Reversible Container Pallet



## Technical Data

Dimensions 43.3x43.3x5.5 inches (1100x1100x140 mm)  
Weight 60.0 lbs

### Load Capacities

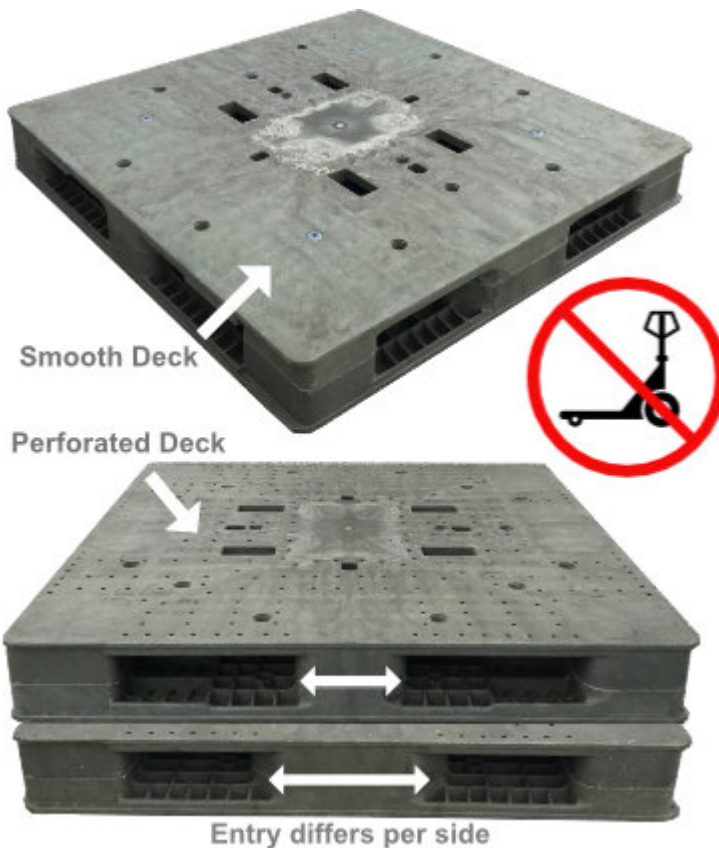
Static 10000 lbs  
Dynamic 2500 lbs  
Racking ST Req

Entry 4-way  
Truckload Qty 480  
Stack TL 16

Load capacities for used pallets may be unavailable or may have changed since issued. Unit load Sample Tests (ST) are recommended to confirm successful use with specific applications and equipment. TL (truckload) quantities are approximate and may vary by transport equipment or other factors.

## Handling Data

<b>Nestable</b> No	<b>Reusability</b> One-Way & Multi-Trip	<b>ISPM-15 Exempt</b> Yes
<b>Stackable</b> Yes	<b>Destination</b> Captive & Export	<b>Food Grade</b> Yes, non-FDA
<b>Rackable</b> Yes	<b>Airfreight</b> No	<b>Pharmaceutical</b> Yes



## Materials and Colors

**Condition**  
Used

**Material**  
HDPE/PP

**Color**  
Varies

(High-Density Polypropylene/Polyethylene)

Colors and manufacturers vary and orders may be mixed. To avoid return freight charges ask your Sales Rep about special requests. All used pallets have been inspected and cleaned. Pallets may have limited cosmetic damage, but all are structurally sound.

## Deck Specs

**Top Deck**  
Closed

**Bottom Deck**  
Reversible - Double-Sided

## Features

Sturdy reversible pallet. Closed deck design features smooth surface on one side and perforated on other.

- Entry width varies by side
- Not suitable for pallet jack
- Allows for safe double stacking
- Cubes out shipping container to save costs
- Designed for Super Sack® and drum loads
- Easy-to-clean hygienic design
- Suitable for packaged food items  
(not approved for direct food contact)
- Impervious to acids, fats, solvents and odors
- Resists water absorption & bacteria growth
- Inert to infestation, mold and mildew
- Consistently dimensionally accurate
- Exempt from ISPM 15 shipping regulations

**Nelson™**

The Nelson Company

(443) 649-5294

[plastic@NelsonCompany.com](mailto:plastic@NelsonCompany.com)

[www.NelsonCompany.com](http://www.NelsonCompany.com)

[www.NelsonTechCenter.com](http://www.NelsonTechCenter.com)