

# NPP-4545-FP-CP9

## 45x45 (Square) Plastic Chemical Pallet



### Technical Data

Dimensions 44.9x44.9x5.9 inches (1140x1140x150 mm)  
Weight 28.5 lbs

#### Load Capacities

Static 6200 lbs  
Dynamic 3100 lbs  
Racking --

Entry 4-way  
Truckload Qty 416  
Stack TL / LTL -- / 16

TL (truckload) and LTL (less-than-truckload) quantities are approximate and may vary by transport equipment or other factors.

### Handling Data

<b>Nestable</b> No	<b>Reusability</b> Multi-Trip	<b>ISPM-15 Exempt</b> Yes
<b>Stackable</b> Yes	<b>Destination</b> Captive & Export	<b>Food Grade</b> Yes, non-FDA
<b>Rackable</b> No	<b>Airfreight</b> Yes	<b>Pharmaceutical</b> Yes



### Materials and Colors

**Condition**  
New

<b>Material</b> HDPE/PP (Recycled) HDPE/PP (Virgin*)	<b>Color</b> Black Gray/Custom*
--	---------------------------------------

(High-Density Polyethylene/Polypropylene)

\*Custom colors and markings available in virgin material. (Minimum quantities required.)

### Deck Specs

**Top Deck**  
Open

**Bottom Deck**  
6 Runner - Perimeter+2 Cross  
(cruciform perimeter base)

Available Options:  
12 grommets under deck

### Features

For any industry moving boxes, bulk bags, containers, drums or octabins.

- Matches dimensions of CP9 chemical pallet w/ hooks on corners for securing stretch wrap
- One-piece design reduces weak points and the potential for cracks
- Wide angle runners allow for easy forklift entry, preventing bag tears and other damage
- Unique top deck reduces the need for slip sheets and dividers
- Allows for safe double stacking
- Easy-to-clean hygienic design
- Suitable for packaged food items (not approved for direct food contact)
- Sanitary choice for strict drug manufacturing requirements
- Impervious to acids, fats, solvents and odors
- Resists water absorption & bacteria growth
- Inert to infestation, mold and mildew
- Consistently dimensionally accurate
- Exempt from ISPM 15 shipping regulations

# Nelson™

The Nelson Company

(443) 649-5294

[plastic@NelsonCompany.com](mailto:plastic@NelsonCompany.com)

[www.NelsonCompany.com](http://www.NelsonCompany.com)

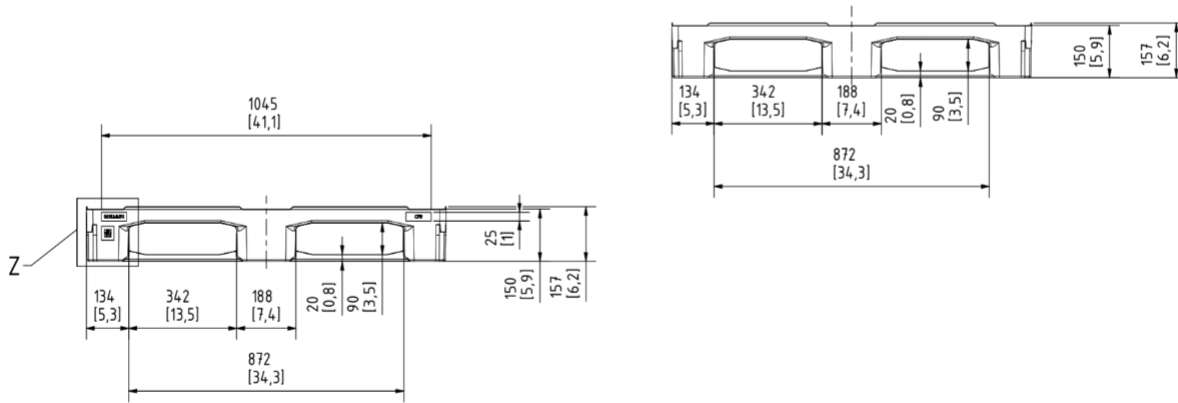
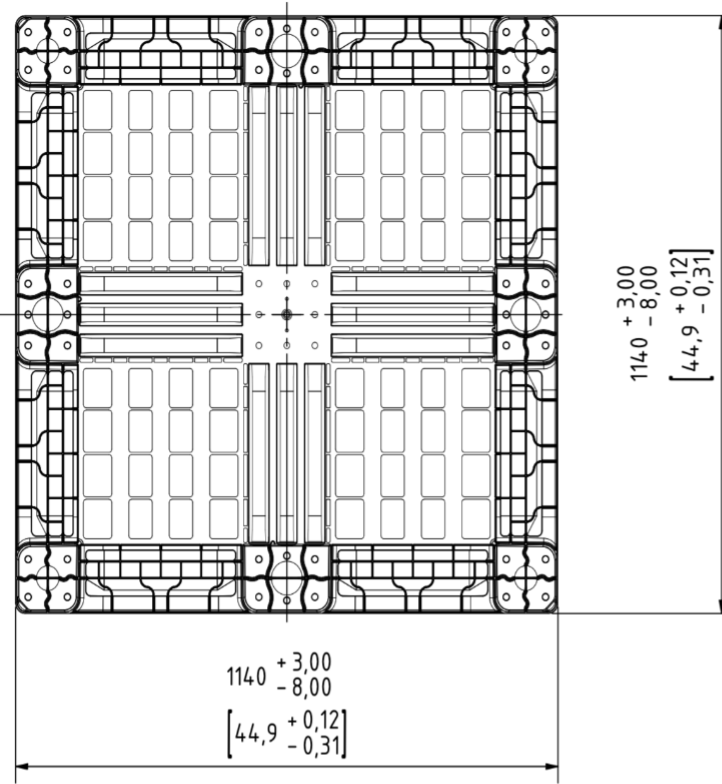
[www.NelsonTechCenter.com](http://www.NelsonTechCenter.com)

# NPP-4545-FP-CP9

45x45 (Square)  
Plastic Chemical Pallet



## Technical Drawings



**Nelson**<sup>TM</sup>

The Nelson Company

(443) 649-5294

[plastic@NelsonCompany.com](mailto:plastic@NelsonCompany.com)

[www.NelsonCompany.com](http://www.NelsonCompany.com)

[www.NelsonTechCenter.com](http://www.NelsonTechCenter.com)