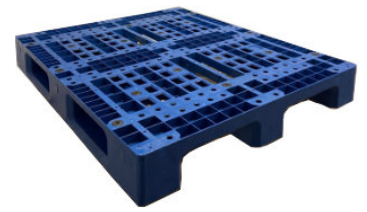


# UP-1210-3R-150mm30lbs

## 48x40 (Standard) Plastic Industrial Pallet



### Technical Data

Dimensions 47.24x39.37x5.9 inches (1200x1000x150 mm)  
Weight 30 lbs

#### Load Capacities

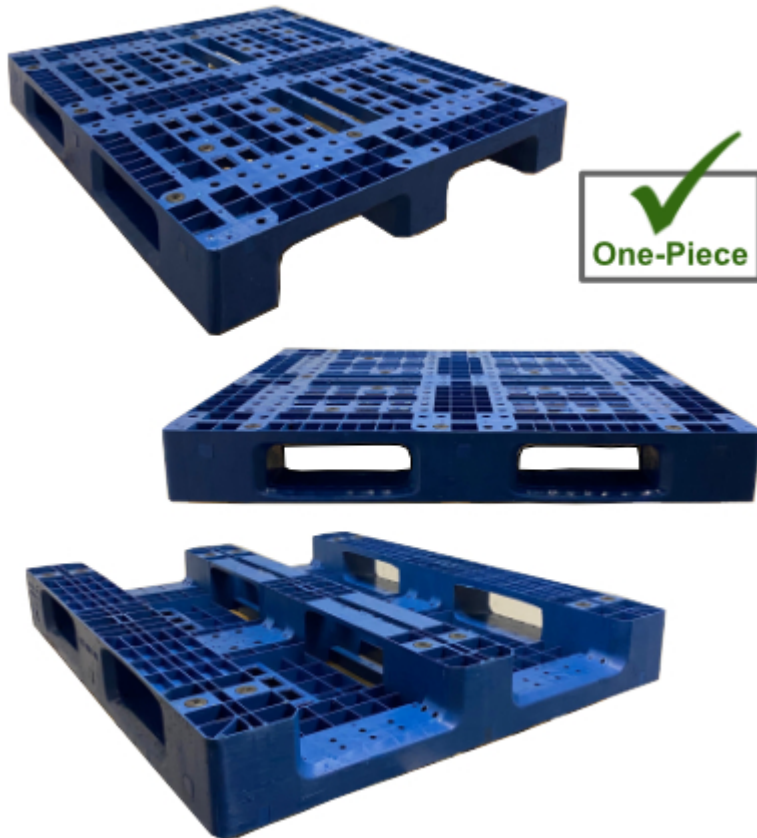
Static 11023 lbs  
Dynamic 2755 lbs  
Racking 1100 lbs

Entry 4-way  
Truckload Qty 510  
Stack TL 17

Load capacities for used pallets may be unavailable or may have changed since issued. Unit load Sample Tests (ST) are recommended to confirm successful use with specific applications and equipment. TL (truckload) quantities are approximate and may vary by transport equipment or other factors.

### Handling Data

<b>Nestable</b> No	<b>Reusability</b> One-Way & Multi-Trip	<b>ISPM-15 Exempt</b> Yes
<b>Stackable</b> Yes	<b>Destination</b> Captive & Export	<b>Food Grade</b> Yes, non-FDA
<b>Rackable</b> Yes	<b>Airfreight</b> Yes	<b>Pharmaceutical</b> Yes



### Materials and Colors

**Condition**  
Used

**Material** HDPE/PP  
**Color** Varies

(High-Density Polyethylene/Polypropylene)

Colors and manufacturers vary and orders may be mixed. To avoid return freight charges ask your Sales Rep about special requests. All used pallets have been inspected and cleaned. Pallets may have limited cosmetic damage, but all are structurally sound.

### Deck Specs

**Top Deck**  
Open

**Bottom Deck**  
3 Runner - Unidirectional Long Side

### Features

Mixed load of various colors, mostly blue.

- One piece design for added durability
- Allows for safe double stacking
- Easy-to-clean hygienic design
- Suitable for packaged food items  
(not approved for direct food contact)
- Impervious to acids, fats, solvents and odors
- Resists water absorption & bacteria growth
- Inert to infestation, mold and mildew
- Consistently dimensionally accurate
- Exempt from ISPM 15 shipping regulations

# Nelson™

The Nelson Company

(443) 649-5294

[plastic@NelsonCompany.com](mailto:plastic@NelsonCompany.com)

[www.NelsonCompany.com](http://www.NelsonCompany.com)

[www.NelsonTechCenter.com](http://www.NelsonTechCenter.com)