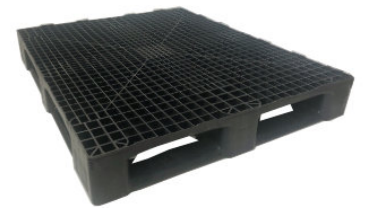


# UP-1210-FP-160mm43lbs

## 48x40 (Standard) Plastic Industrial Pallet



### Technical Data

Dimensions 47.2x39.4x6.3 inches (1200x1000x160 mm)  
Weight 43 lbs

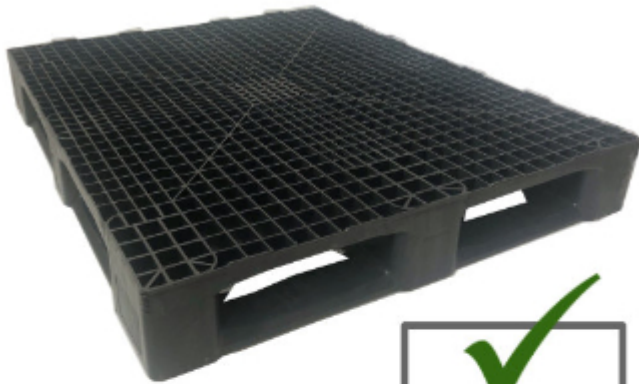
**Load Capacities**  
Static 16500 lbs  
Dynamic 4950 lbs  
Racking 2420 lbs

Entry 4-way  
Truckload Qty 450  
Stack TL / LTL -- / 15

Load capacities for used pallets may be unavailable or may have changed since issued. Unit load Sample Tests (ST) are recommended to confirm successful use with specific applications and equipment. TL (truckload) and LTL (less-than-truckload) quantities are approximate and may vary by transport equipment or other factors.

### Handling Data

<b>Nestable</b> No	<b>Reusability</b> One-Way & Multi-Trip	<b>ISPM-15 Exempt</b> Yes
<b>Stackable</b> Yes	<b>Destination</b> Captive & Export	<b>Food Grade</b> Yes, non-FDA
<b>Rackable</b> Yes	<b>Airfreight</b> Yes	<b>Pharmaceutical</b> Yes



### Materials and Colors

**Condition**  
Used

**Material** HDPE/PP  
**Color** Varies

(High-Density Polyethylene/Polypropylene)

Colors and manufacturers vary and orders may be mixed. To avoid return freight charges ask your Sales Rep about special requests. All used pallets have been inspected and cleaned. Pallets may have limited cosmetic damage, but all are structurally sound.

### Deck Specs

**Top Deck**  
Open

**Bottom Deck**  
5 Runner - Perimeter+1 Long Side

### Features

Mixed lot of mostly black. Raised rims around perimeter can be removed for a charge.

- One piece design for added durability
- Anti-impact perimeter
- 32° - 104° F temperature range
- Allows for safe double stacking
- Easy-to-clean hygienic design
- Suitable for packaged food items  
(not approved for direct food contact)
- Impervious to acids, fats, solvents and odors
- Resists water absorption & bacteria growth
- Inert to infestation, mold and mildew
- Consistently dimensionally accurate
- Exempt from ISPM 15 shipping regulations

# Nelson™

The Nelson Company

(443) 649-5294

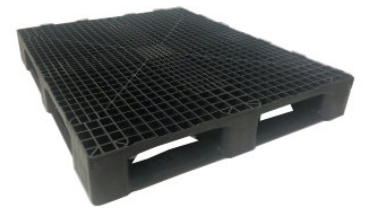
[plastic@NelsonCompany.com](mailto:plastic@NelsonCompany.com)

[www.NelsonCompany.com](http://www.NelsonCompany.com)

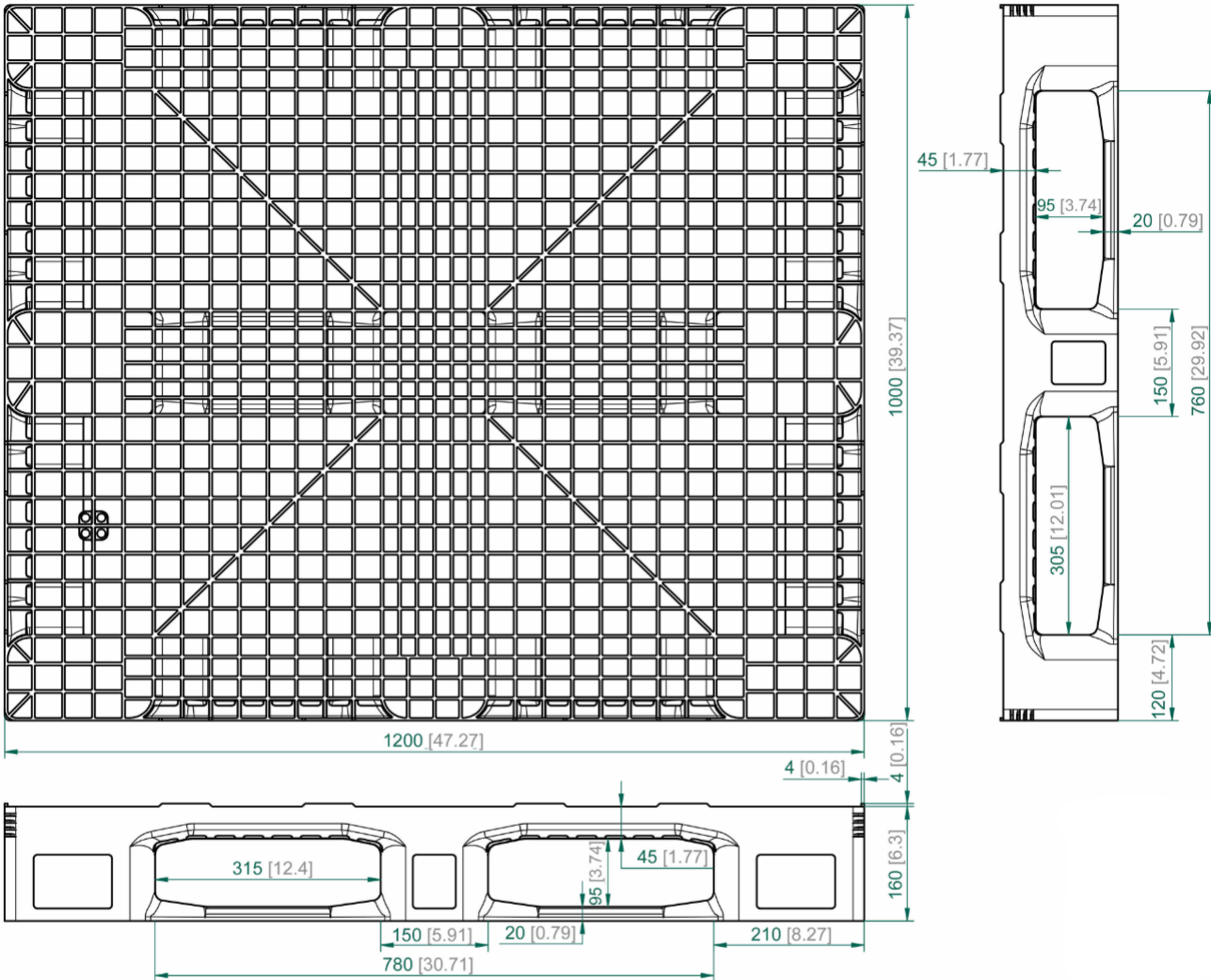
[www.NelsonTechCenter.com](http://www.NelsonTechCenter.com)

# UP-1210-FP-160mm43lbs

48x40 (Standard)  
Plastic Industrial Pallet



## Technical Drawings



**Nelson**<sup>TM</sup>

The Nelson Company

(443) 649-5294

[plastic@NelsonCompany.com](mailto:plastic@NelsonCompany.com)

[www.NelsonCompany.com](http://www.NelsonCompany.com)

[www.NelsonTechCenter.com](http://www.NelsonTechCenter.com)

Tech Sheet Generated On: 5/20/2024

Specs subject to change without notice. Provided for informational purposes only. Technical data are guideline values and may vary based on intended use, features, raw materials and environment. Nothing shall be construed as warranties or guarantees, express or implied, regarding products or their use, application, performance or otherwise.