

NPP-4840-FP-ENUS8-OD

48x40 (Standard) Plastic Industrial Pallet



Technical Data

Dimensions 48x40x6.0 inches (1219x1016x152 mm)
Weight 46.0 lbs

Load Capacities

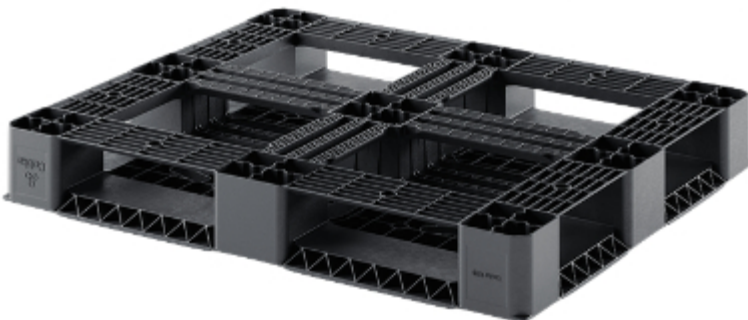
Static 14100 lbs
Dynamic 4400 lbs
Racking 2200 lbs

Entry 4-way
Truckload Qty 510
Stack TL / LTL 17 / 16

TL (truckload) and LTL (less-than-truckload) quantities are approximate and may vary by transport equipment or other factors.

Handling Data

Nestable No	Reusability Multi-Trip	ISPM-15 Exempt Yes
Stackable Yes	Destination Captive	Food Grade Yes, non-FDA
Rackable Yes	Airfreight Yes	Pharmaceutical Yes



Materials and Colors

Condition
New

Material PPM (Recycled) **Color** Black

(High-Density Polypropylene Mix)

Deck Specs

Top Deck

Closed

Note: top deck includes vents and is not a true solid top.

Bottom Deck

6 Runner - Perimeter+2 Cross
(cruciform perimeter base)

Available Options:

Top and Bottom Grommets (recommended with freezer use)

Features

- Top Safety Rim
- Allows for safe double stacking
- Easy-to-clean hygienic design
- Suitable for packaged food items
(not approved for direct food contact)
- Impervious to acids, fats, solvents and odors
- Resists water absorption & bacteria growth
- Inert to infestation, mold and mildew
- Consistently dimensionally accurate
- Exempt from ISPM 15 shipping regulations

Nelson™

The Nelson Company

(443) 649-5294

plastic@NelsonCompany.com

www.NelsonCompany.com

www.NelsonTechCenter.com