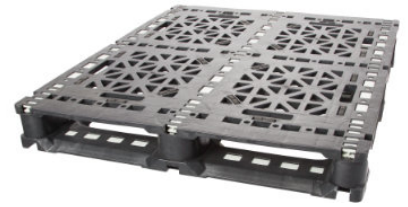


GL-4840-FP-MV0Rod

48x40 (Standard) Plastic Industrial Pallet



Technical Data

Dimensions 48x40x5.62 inches
Weight 42.0 lbs

Load Capacities

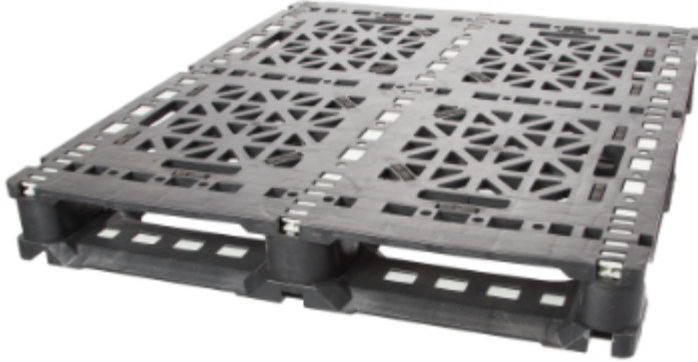
Static 15000 lbs
Dynamic 5000 lbs
Racking 800 lbs

Entry 4-way
Truckload Qty 570
Stack TL / LTL 19 / 17

TL (truckload) and LTL (less-than-truckload) quantities are approximate and may vary by transport equipment or other factors.

Handling Data

| | | |
|-------------------------|--|-----------------------------------|
| Nestable No | Reusability One-Way & Multi-Trip | ISPM-15 Exempt Yes |
| Stackable Yes | Destination Captive & Export | Food Grade Yes, non-FDA |
| Rackable Yes | Airfreight Yes | Pharmaceutical Yes |



Materials and Colors

Condition
New

Material
HDPE (Recycled)

Color
Black

(High-Density Polyethylene)

Deck Specs

Top Deck
Open

Bottom Deck
6 Runner - Perimeter+2 Cross
(cruciform perimeter base)

Features

Available with Rod Insert Options:

0 Rod
3 Rod
5 Rod
10 Rod

- Weather Resistant
- Conveyable
- Allows for safe double stacking
- Easy-to-clean hygienic design
- Suitable for packaged food items
(not approved for direct food contact)
- Impervious to acids, fats, solvents and odors
- Resists water absorption & bacteria growth
- Inert to infestation, mold and mildew
- Consistently dimensionally accurate
- Exempt from ISPM 15 shipping regulations

NelsonTM

The Nelson Company

(443) 649-5294

plastic@NelsonCompany.com

www.NelsonCompany.com

www.NelsonTechCenter.com