

# CP-4840-3R-E3CD-FDA

## 48x40 (Standard) Plastic Industrial Pallet



### Technical Data

Dimensions 48x40x6.1 inches (1219x1016x155 mm)  
Weight 37.0 lbs

#### Load Capacities

Static 8800 lbs  
Dynamic 4400 lbs  
Racking 2200 lbs

Entry 4-way  
Truckload Qty 510  
Stack TL / LTL 17 / 15

TL (truckload) and LTL (less-than-truckload) quantities are approximate and may vary by transport equipment or other factors.

### Handling Data

<b>Nestable</b> No	<b>Reusability</b> Multi-Trip	<b>ISPM-15 Exempt</b> Yes
<b>Stackable</b> Yes	<b>Destination</b> Captive	<b>Food Grade</b> FDA Blue
<b>Rackable</b> Yes	<b>Airfreight</b> Yes	<b>Pharmaceutical</b> Yes

### Materials and Colors

**Condition**  
New

**Material** HDPP      **Color** Blue (others may be available)

(High-Density Polypropylene)

It is the sole responsibility of end-user to conduct a thorough risk assessment to ensure the pallet material and design are compatible with internal sanitation protocols and specific regulatory requirements.

### Deck Specs

**Top Deck**  
Closed

**Bottom Deck**  
3 Runner - Unidirectional Long Side

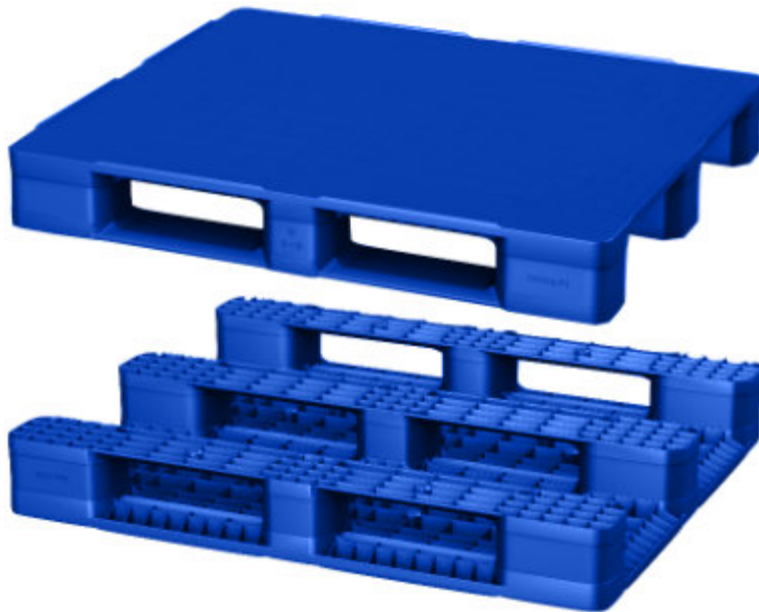
**Available Options:**  
RFID Transponders  
Individual Markings  
Anti-Slip Bottom Grommets  
FDA Version with Freezer Additives  
Rod Inserts for Increased Performance.

### Features

**Note:** CP-4840-3R-E3CD-FDA was previously known as NPP-4840-3R-E3CD-FDA

Ideal for closed loops or distribution chains across industry sectors including Electronics, Food, Retail, Medical and Pharmaceutical.

- Classic FDA blue color helps distinguish pallets in your system
- Virgin material may be available for direct contact applications (ask for details)
- High performance at low cost
- Top Safety Rim
- Allows for safe double stacking
- Impervious to acids, fats, solvents and odors
- Resists water absorption & bacteria growth
- Inert to infestation, mold and mildew
- Consistently dimensionally accurate
- Exempt from ISPM 15 shipping regulations



### DECK & BOTTOM SUPPORT OPTIONS

Open or Closed Deck

3 Runner or 6 Runner



# Nelson™

The Nelson Company  
(443) 649-5294

[plastic@NelsonCompany.com](mailto:plastic@NelsonCompany.com)

[www.NelsonCompany.com](http://www.NelsonCompany.com)

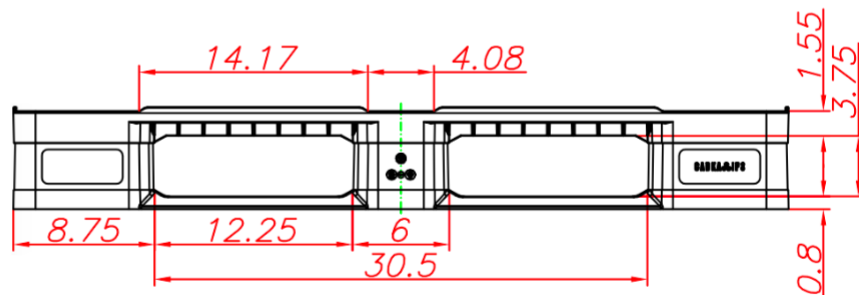
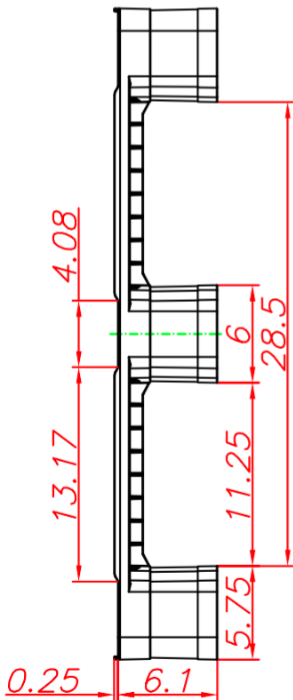
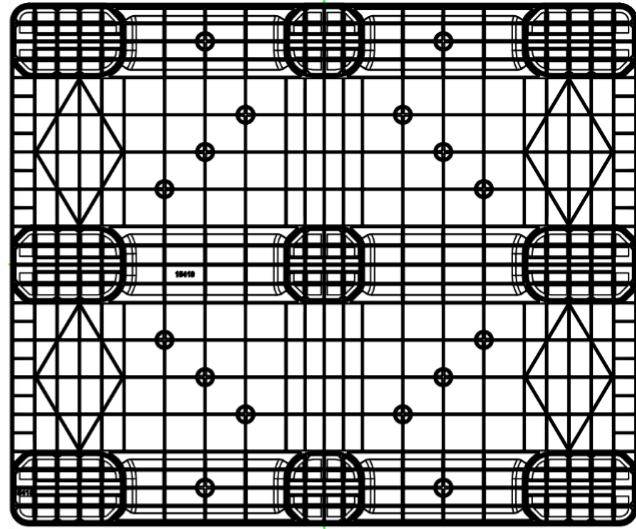
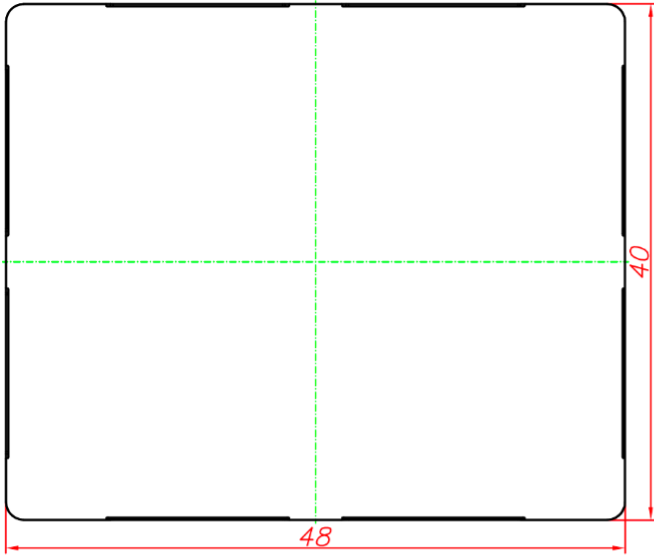
[www.NelsonTechCenter.com](http://www.NelsonTechCenter.com)

# CP-4840-3R-E3CD-FDA

48x40 (Standard)  
Plastic Industrial Pallet



## Technical Drawings



**Nelson**™

The Nelson Company  
(443) 649-5294

[plastic@NelsonCompany.com](mailto:plastic@NelsonCompany.com)

[www.NelsonCompany.com](http://www.NelsonCompany.com)

[www.NelsonTechCenter.com](http://www.NelsonTechCenter.com)