

# CR-1210-3R-TC3-3RBL

## 48x40 (Standard) Plastic Industrial Pallet



### Technical Data

Dimensions 47.25x39.25x6.3 inches (1200x1000x160 mm)  
Weight 47.4 lbs

#### Load Capacities

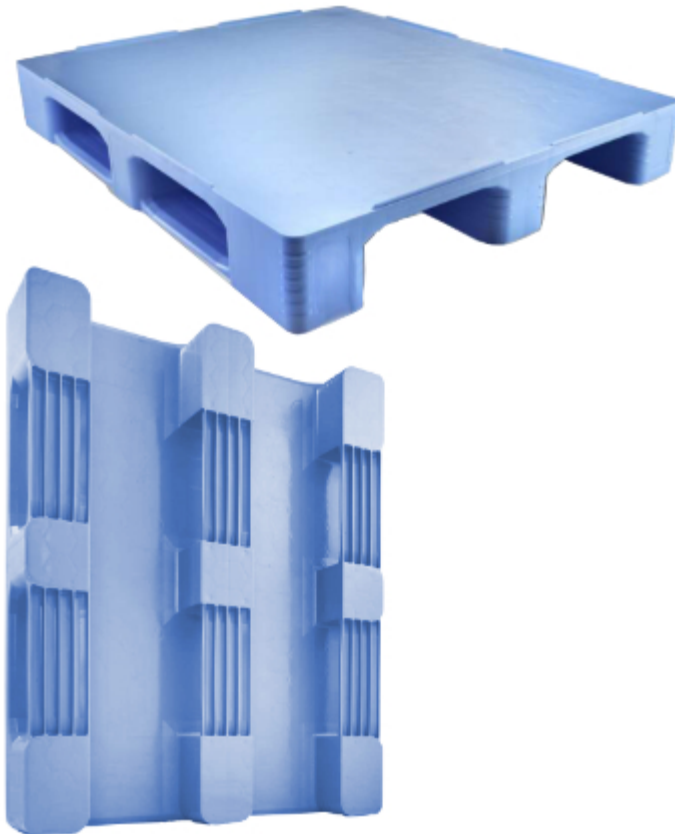
Static 16550 lbs  
Dynamic 3300 lbs  
Racking 2800 lbs

Entry 4-way  
Truckload Qty 340  
Stack TL / LTL 15 / 15

TL (truckload) and LTL (less-than-truckload) quantities are approximate and may vary by transport equipment or other factors.

### Handling Data

<b>Nestable</b> No	<b>Reusability</b> Multi-Trip	<b>ISPM-15 Exempt</b> Yes
<b>Stackable</b> Yes	<b>Destination</b> Captive & Export	<b>Food Grade</b> Yes, non-FDA
<b>Rackable</b> Yes	<b>Airfreight</b> No	<b>Pharmaceutical</b> Yes



### Materials and Colors

**Condition**  
New

**Material** HDPE  
**Color** Light Blue, Black, Gray, more

(High-Density Polyethylene)

### Deck Specs

**Top Deck**  
Closed

**Bottom Deck**  
3 Runner - Unidirectional Long Side

**Options**  
5-Runner

### Features

High load-bearing capacity for heavy-duty applications. Ideal for roller conveyors; automated high rack warehouses; transportation and storage of bagged goods.

- Patented welding seam geometry of the top and bottom deck
- Solid wall thicknesses ensure highest impact and breakage resistance
- Chamfered edges on both sides of all runners for optimal handling with forklift trucks
- Perfect fit for any industry requiring maximum hygiene: food, pharmaceutical or chemical
- Allows for safe double stacking
- Easy-to-clean hygienic design
- Suitable for packaged food items (*not approved for direct food contact*)
- Impervious to acids, fats, solvents and odors
- Resists water absorption & bacteria growth
- Inert to infestation, mold and mildew
- Consistently dimensionally accurate
- Exempt from ISPM 15 shipping regulations

**Nelson**<sup>TM</sup>

The Nelson Company  
(443) 649-5294

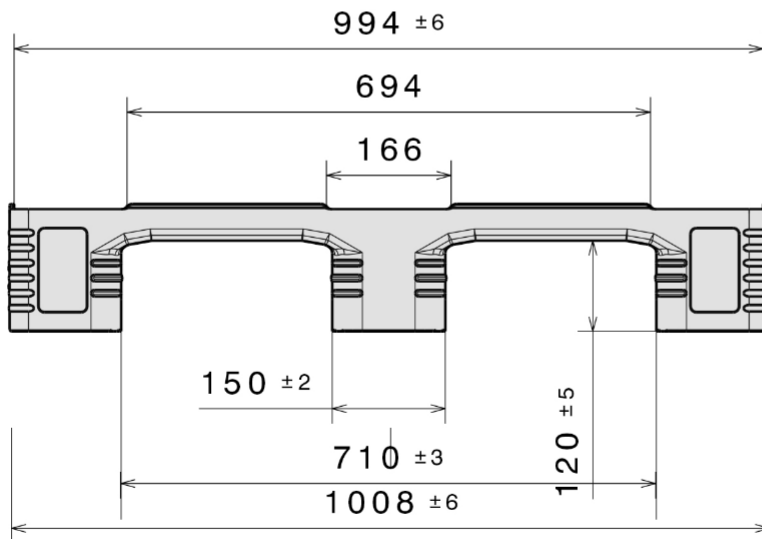
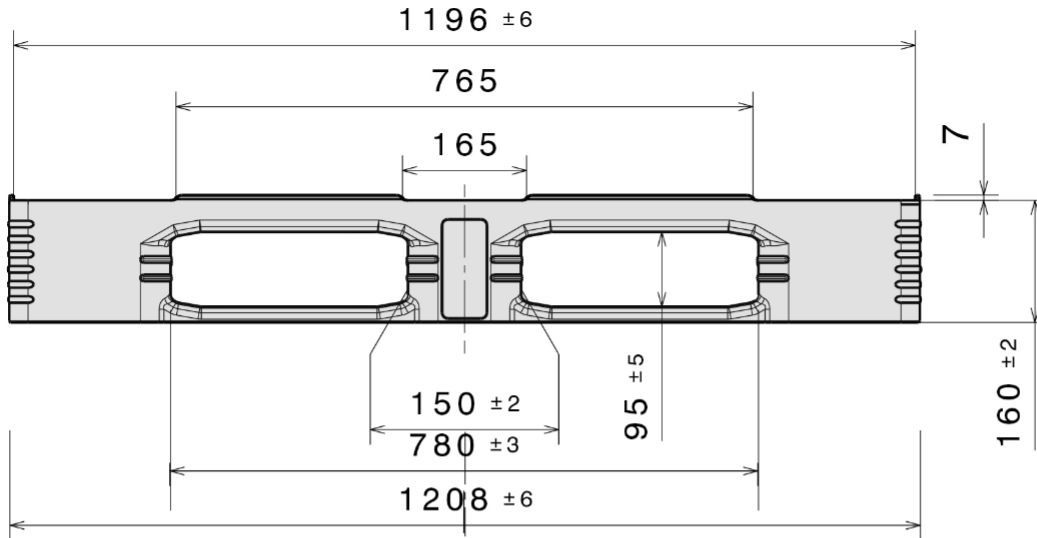
[plastic@NelsonCompany.com](mailto:plastic@NelsonCompany.com)  
[www.NelsonCompany.com](http://www.NelsonCompany.com)  
[www.NelsonTechCenter.com](http://www.NelsonTechCenter.com)

# CR-1210-3R-TC3-3RBL

48x40 (Standard)  
Plastic Industrial Pallet



## Technical Drawings



**Nelson**<sup>TM</sup>

The Nelson Company  
(443) 649-5294

[plastic@NelsonCompany.com](mailto:plastic@NelsonCompany.com)

[www.NelsonCompany.com](http://www.NelsonCompany.com)

[www.NelsonTechCenter.com](http://www.NelsonTechCenter.com)