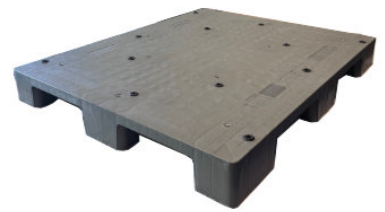


UP-1210-B-130mm28LbCD

48x40 (Standard) Plastic Industrial Pallet



Technical Data

Dimensions 47.25x39.25x5.1 inches (1200x1000x130 mm)
Weight 28 lbs

Load Capacities

Static 6000 lbs
Dynamic 4000 lbs
Racking --

Entry 4-way
Truckload Qty 540
Stack TL / LTL -- / 18

Load capacities for used pallets may be unavailable or may have changed since issued. Unit load Sample Tests (ST) are recommended to confirm successful use with specific applications and equipment. TL (truckload) and LTL (less-than-truckload) quantities are approximate and may vary by transport equipment or other factors.

Handling Data

Nestable No	Reusability One-Way & Multi-Trip	ISPM-15 Exempt Yes
Stackable Yes	Destination Export & Captive	Food Grade Yes, non-FDA
Rackable No	Airfreight Yes	Pharmaceutical Yes

Materials and Colors

Condition
Used

Material
HDPP (Recycled)

Color
Varies

(High-Density Polypropylene)

Colors and manufacturers vary and orders may be mixed. To avoid return freight charges ask your Sales Rep about special requests. All used pallets have been inspected and cleaned. Pallets may have limited cosmetic damage, but all are structurally sound.

Deck Specs

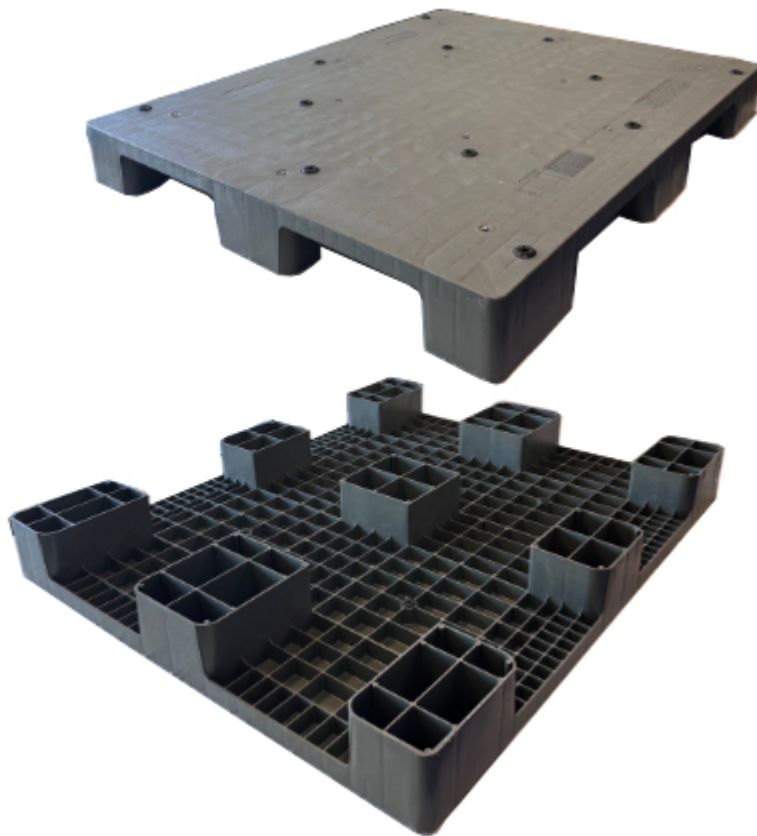
Top Deck
Closed

Bottom Deck
9 Feet

Features

Note: color options are mostly gray but may vary

- 12 gromets to prevent unit load slippage
- Large, Block Feet make stacking possible
- Fully Closed Deck
- Allows for safe double stacking
- Easy-to-clean hygienic design
- Suitable for packaged food items
(not approved for direct food contact)
- Impervious to acids, fats, solvents and odors
- Resists water absorption & bacteria growth
- Inert to infestation, mold and mildew
- Consistently dimensionally accurate
- Exempt from ISPM 15 shipping regulations



NelsonTM

The Nelson Company
(443) 649-5294

plastic@NelsonCompany.com

www.NelsonCompany.com

www.NelsonTechCenter.com