

PG-1210-3R-157MM45LBCD

48x40 (Standard) Plastic Industrial Pallet



Technical Data

Dimensions 47.25x39.40x6.2 inches (1200x1000x157 mm)
Weight 44.5 lbs

Load Capacities

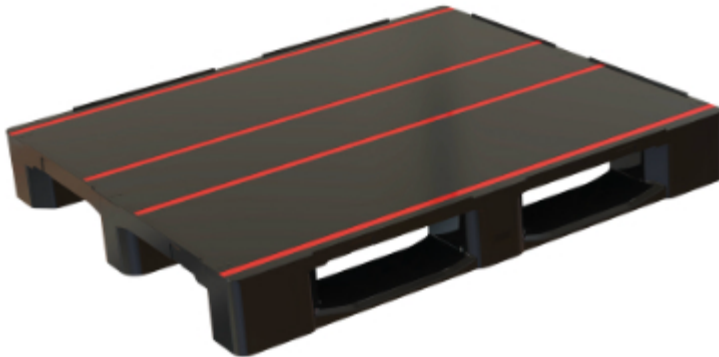
Static 11023 lbs
Dynamic 3307 lbs
Racking 3307 lbs

Entry 4-way
Truckload Qty 510
Stack TL / LTL 17 / 15

TL (truckload) and LTL (less-than-truckload) quantities are approximate and may vary by transport equipment or other factors.

Handling Data

Nestable No	Reusability One-Way & Multi-Trip	ISPM-15 Exempt Yes
Stackable Yes	Destination Captive & Export	Food Grade Yes, non-FDA
Rackable Yes	Airfreight Yes	Pharmaceutical Yes



Materials and Colors

Condition
New

Material HDPP
Color Black

(High-Density Polypropylene)

Deck Specs

Top Deck
Closed

Bottom Deck
3 Runner - Unidirectional Long Side

Options
Rubber anti-slip gems or strips
Safety Rims

Features

- Allows for safe double stacking
- Easy-to-clean hygienic design
- Suitable for packaged food items
(not approved for direct food contact)
- Impervious to acids, fats, solvents and odors
- Resists water absorption & bacteria growth
- Inert to infestation, mold and mildew
- Consistently dimensionally accurate
- Exempt from ISPM 15 shipping regulations

NelsonTM

The Nelson Company

(443) 649-5294

plastic@NelsonCompany.com

www.NelsonCompany.com

www.NelsonTechCenter.com

Spec Sheet Generated On: 10/22/2024

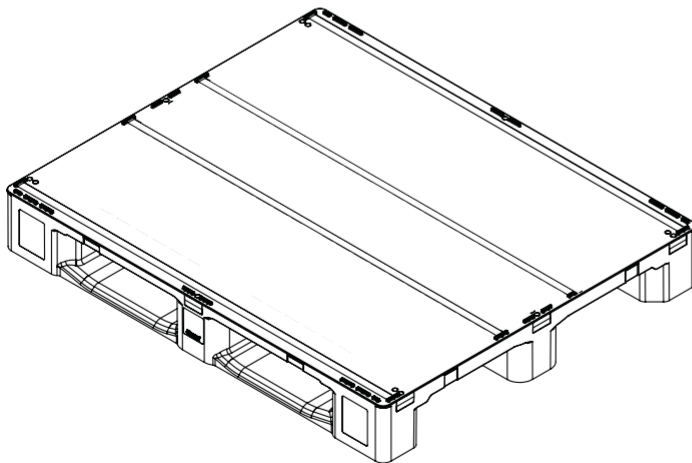
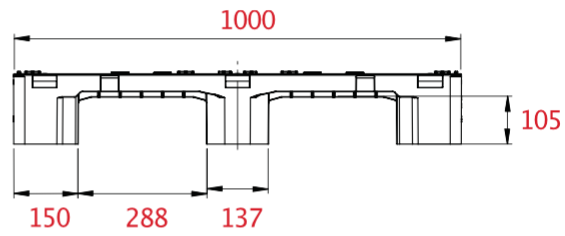
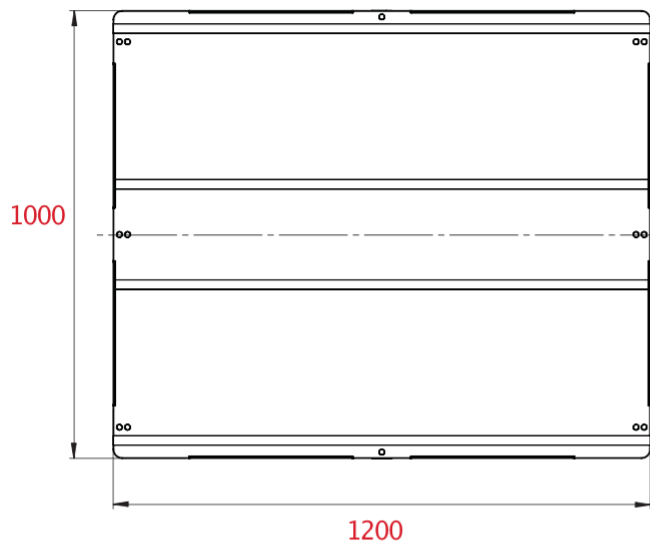
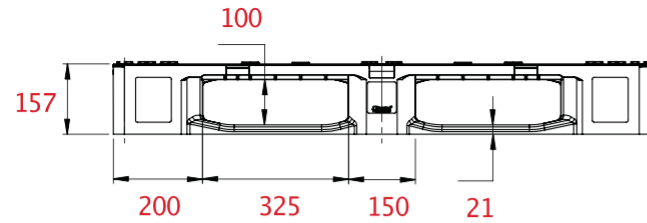
Specs subject to change without notice. Provided for informational purposes only. Technical data are guideline values and may vary based on intended use, features, raw materials and environment. Nothing shall be construed as warranties or guarantees, express or implied, regarding products or their use, application, performance or otherwise.

PG-1210-3R-157MM45LBCD

48x40 (Standard)
Plastic Industrial Pallet



Technical Drawings



NelsonTM

The Nelson Company

(443) 649-5294

plastic@NelsonCompany.com

www.NelsonCompany.com

www.NelsonTechCenter.com